



# DAISY

Data Analysis and Information Security Lab

# Personalized Fitness Assistance Using WiFi

**Jian Liu**

**Advisor: Prof. Yingying (Jennifer) Chen**

**WINLAB**

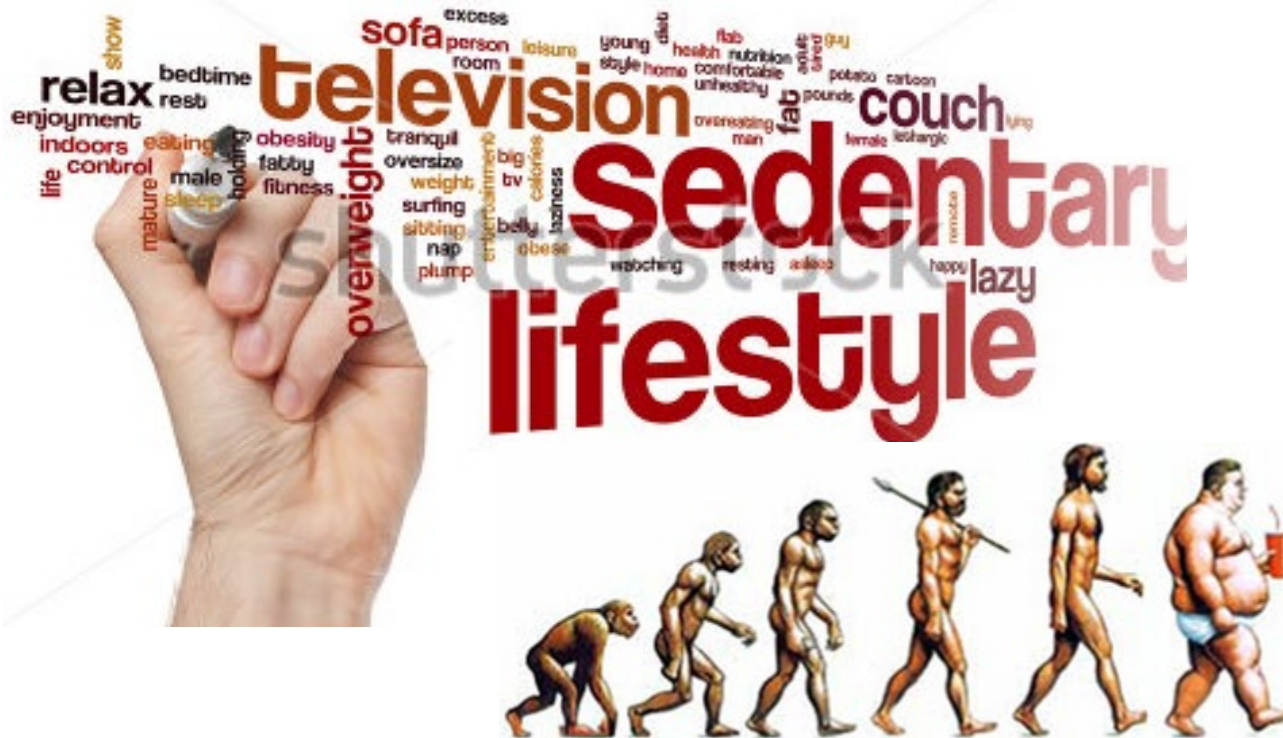
**Rutgers University  
New Brunswick, NJ, USA**

**Email: [jianliu@winlab.rutgers.edu](mailto:jianliu@winlab.rutgers.edu)**

**<http://www.winlab.rutgers.edu/~jianliu/>**

# Why Exercise?

- ❑ Accelerated pace of life has resulted in many of us adapting to a **sedentary lifestyle**
- ❑ People are required to have **regular exercise** to stay healthy



# Motivation

- ❑ Work-at-home people/office workers **can barely squeeze in time** to go to dedicated exercise places.

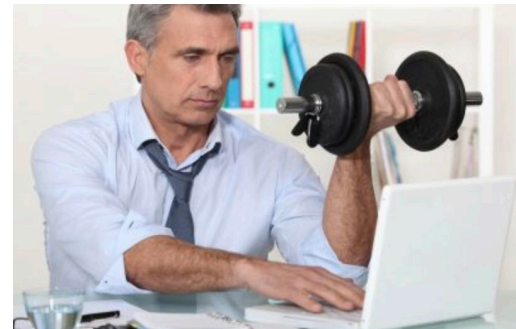


# Motivation

- ❑ There is a trend for people to perform **regular workout in home/office environments!**



No space and time constraint!



# Why Exercise Monitoring?

Did I follow my plan?

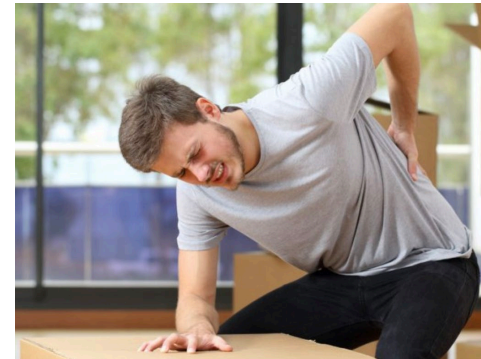


Keeping track of your workouts

Is my movement correct?



Avoid inefficient training or even accidental injuries





# Traditional Fitness Assistants

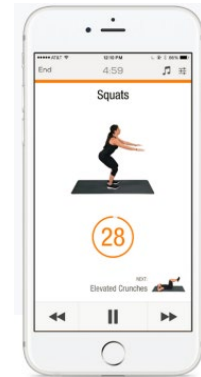
Personal coach



Video



App instruction



## ❑ Desirable system:

- ❖ Workout statistic & workout assessment
- ❖ Doesn't require any attached sensors
- ❖ Incurs minimum involvement (e.g., w/o coach)

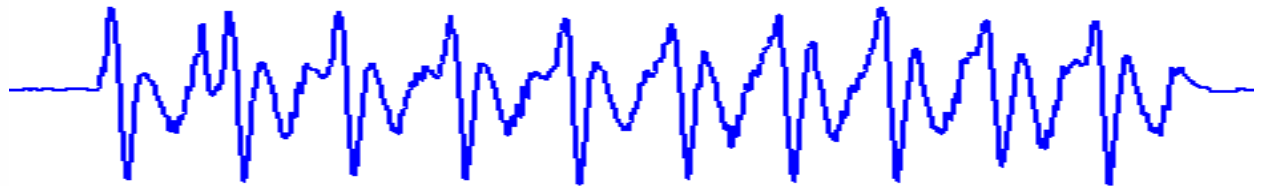


# Our Previous Work: Virtual Fitness Coach Empowered by Wearable Mobile Devices

## □ Basic idea

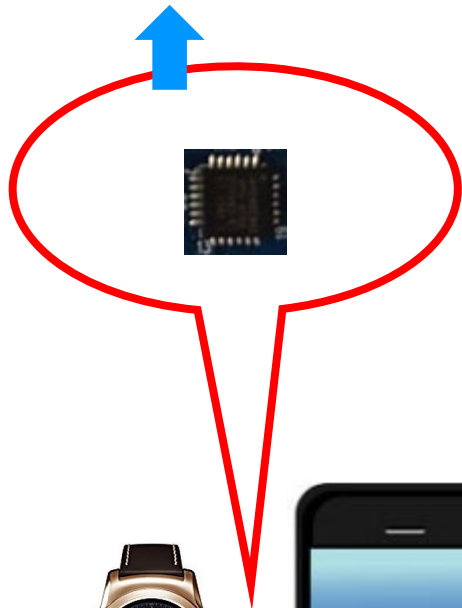
- ❖ Recording the sensor readings on wearable mobile devices
- ❖ Exploring their capability of **deriving fine-grained exercise information**
- ❖ **Assessing dynamic postures** (movement patterns & positions) automatically during workout

## □ Intuition



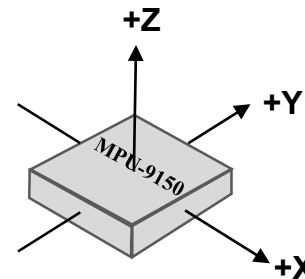
# Our Previous Work: Virtual Fitness Coach Empowered by Wearable Mobile Devices

Integrated accelerometer, gyroscope, magnetometer



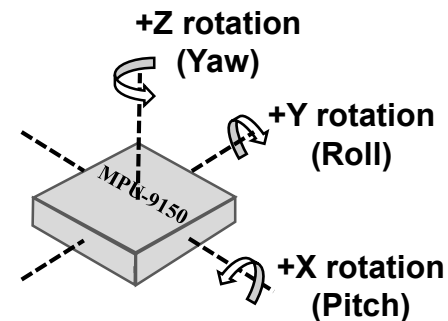
## Accelerometer

Measures the acceleration



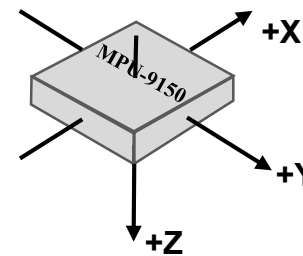
## Gyroscope

Measures the orientation of the axis



## Magnetometer

Measures the magnetic field strength





# Our Goal

## ☐ Contactless smart fitness assistant



Device-free



Non-intrusive



Reuse of existing **WiFi infrastructure**



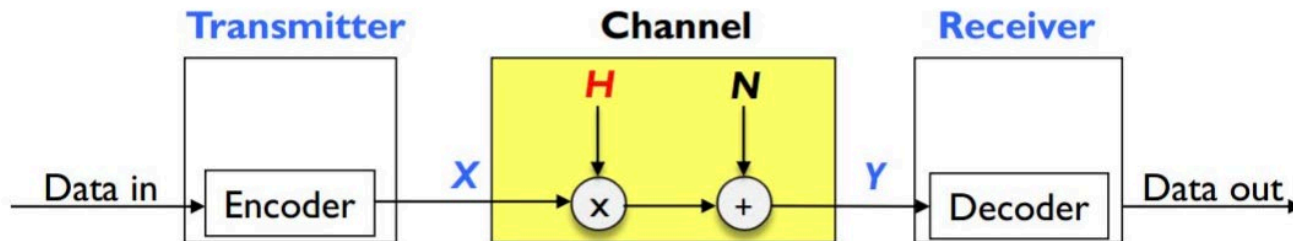
# Basic Idea

- ❑ Different exercises involve **different body movements**
  - ❖ Such movements **affect WiFi channels** differently
- ❑ Leverage WiFi channel information to obtain **workout statistic** and perform **workout assessment**



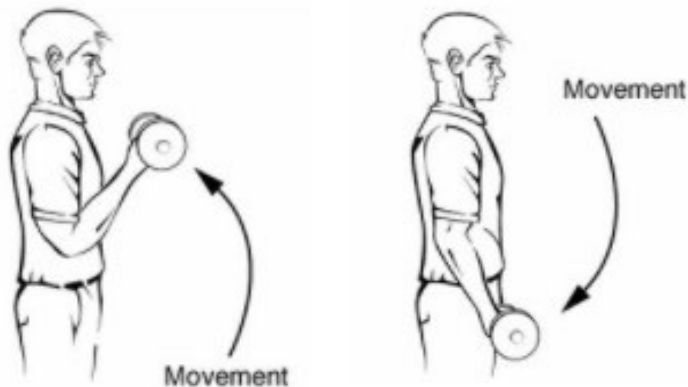
# Capture Body Movements Using CSI

- ❑ Exploit **fine-grained CSI (Channel State Information)** to detect body movements
- ❑ In an OFDM system, the received signal over multiple subcarriers is
$$Y = HX + N$$
(X- transmit signal, N- noise)
  - ❖  $H=Y/X$  -- Channel State Information (CSI)
  - ❖  $H=he^{jw}$  (h: amplitude, w: phase)



# Exercise (Reps & Sets)

- ❑ Exercises consists of **repetitive movements**
  - ❖ Provide **statistic information** (e.g., how many sets and reps for a given exercise).

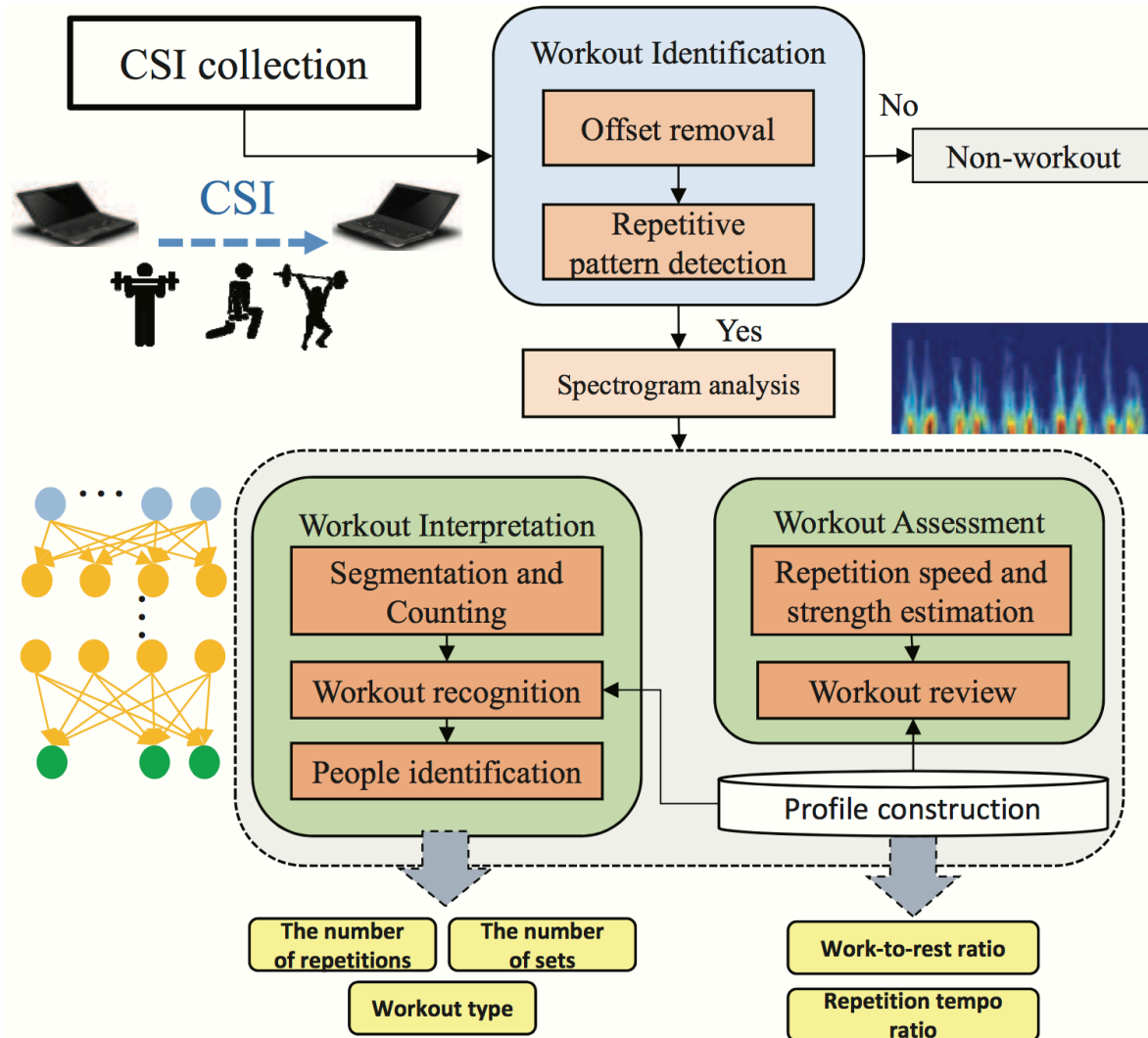


**Repetition:** one complete motion of an exercise

**Set:** a group of consecutive repetitions

- ❑ Different exercises have **distinct impact** on CSI
  - ❖ Capture unique features of CSI readings to infer **exercise type**

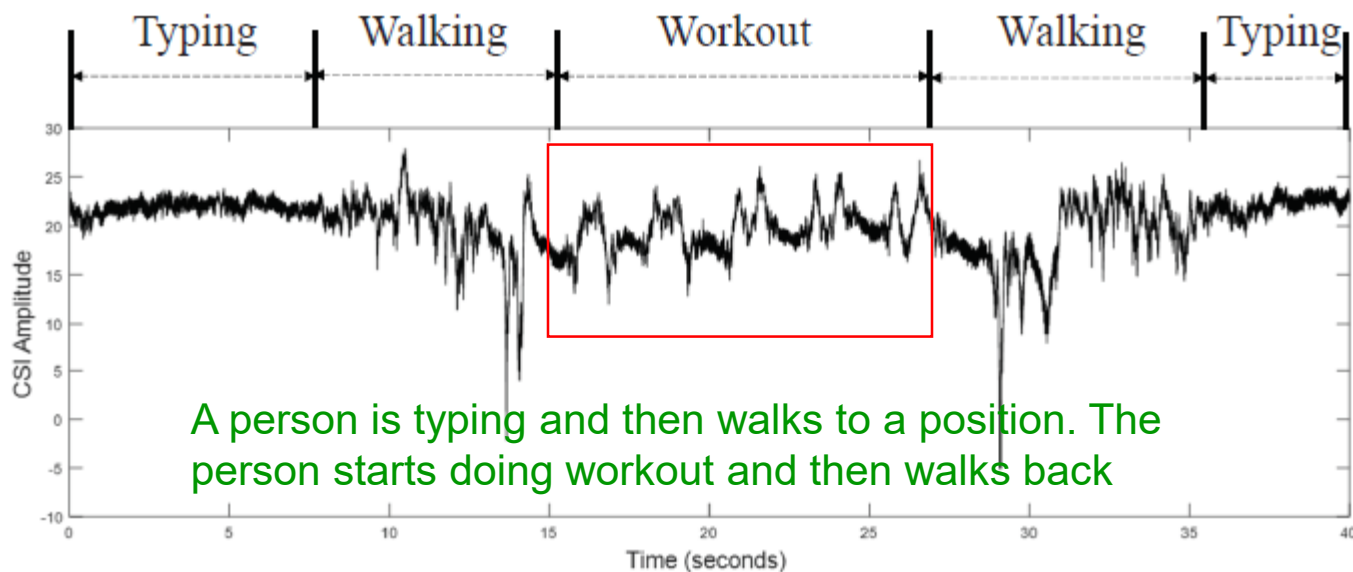
# System Design



# Workout Detection

## □ Intuition

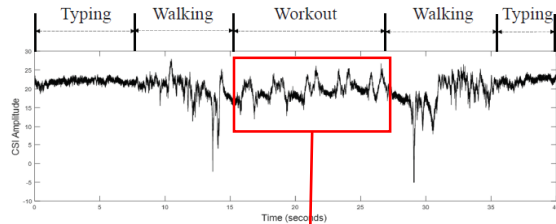
- ❖ **Repetitive patterns** are revealed in CSI readings collected during workout.
- ❖ Non-workout activities do not exhibit such characteristic .



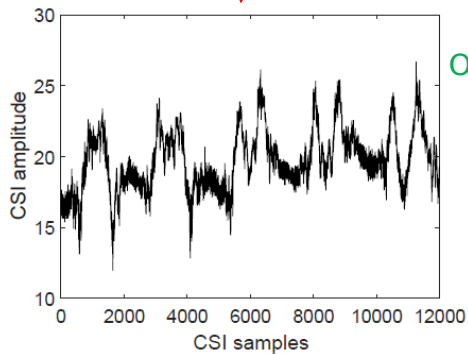
CSI amplitude of one subcarrier with corresponding activity time frame.



# Workout Detection (cont.)

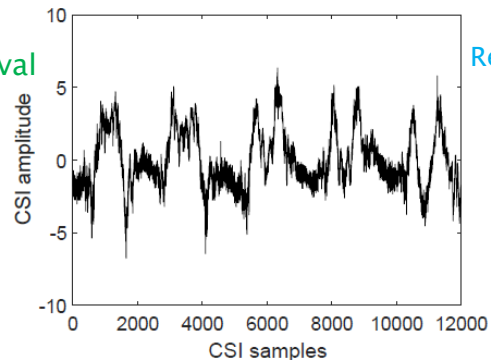


Zoom in



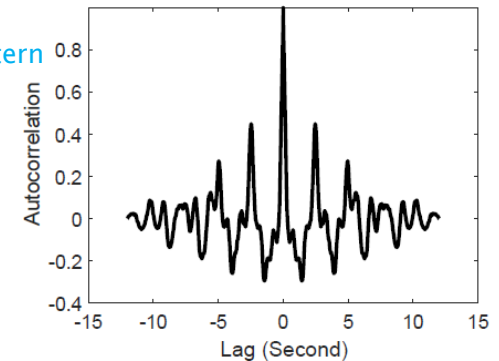
Workout CSI readings

Offset removal



After offset removal

Repetitive pattern detection



Repetitive pattern detection

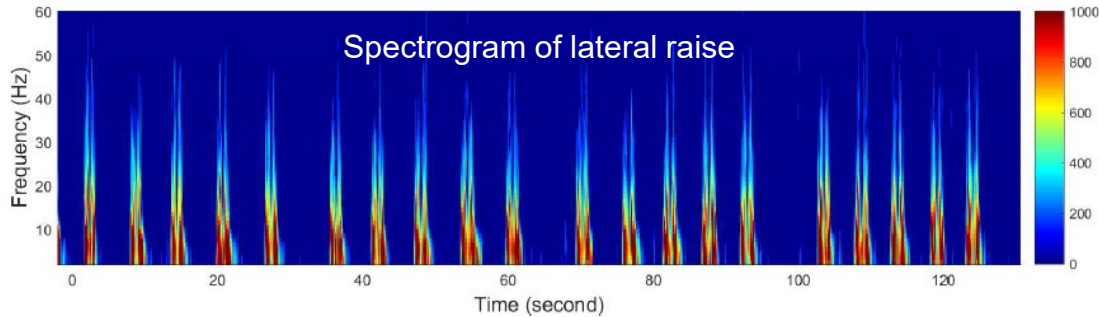
## Offset removal

- ❖ Subtract a fitted low-order polynomial and further remove the mean value.

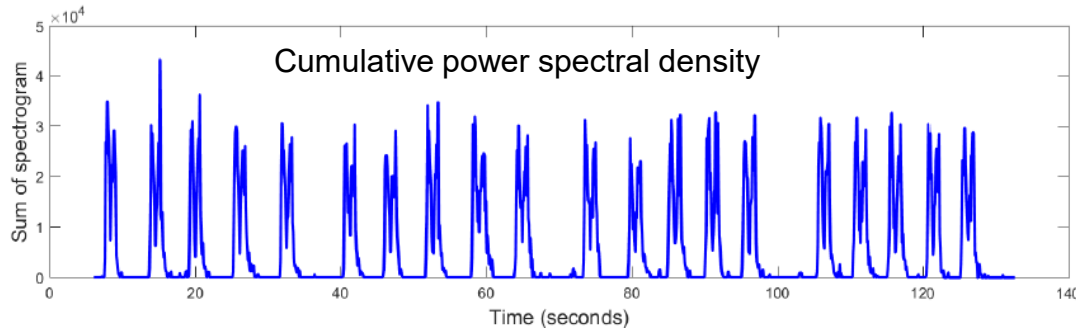
## Repetitive pattern detection

- ❖ Autocorrelation calculation

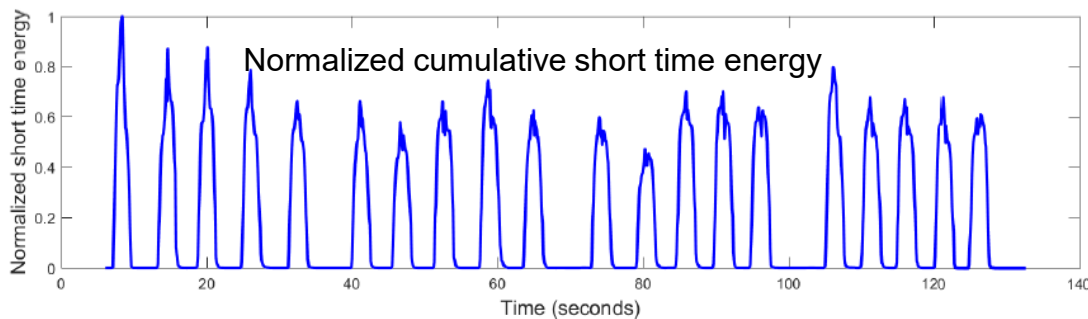
# Segmentation and Counting



- Accumulates all power spectral density (PSD) along the frequency dimension of the spectrogram



- Accumulates the energy of the cumulative PSD based on short time energy (STE)



# Workout Interpretation (cont.)

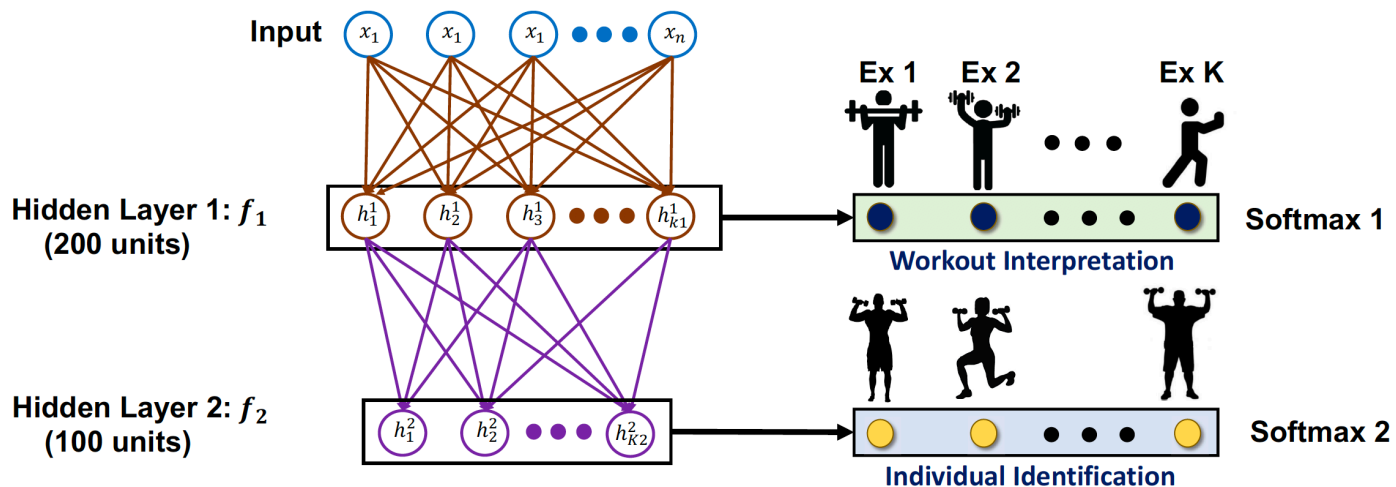
## □ Workout recognition

- ❖ **Differentiate individuals** as a user may **share workout space** with other family members or colleagues

## □ Feature extraction

- ❖ **8 time domain features** extracted from each OFDM subcarrier, including *maximum, minimum, mean, kurtosis, skewness, variance, median* and *standard deviation*

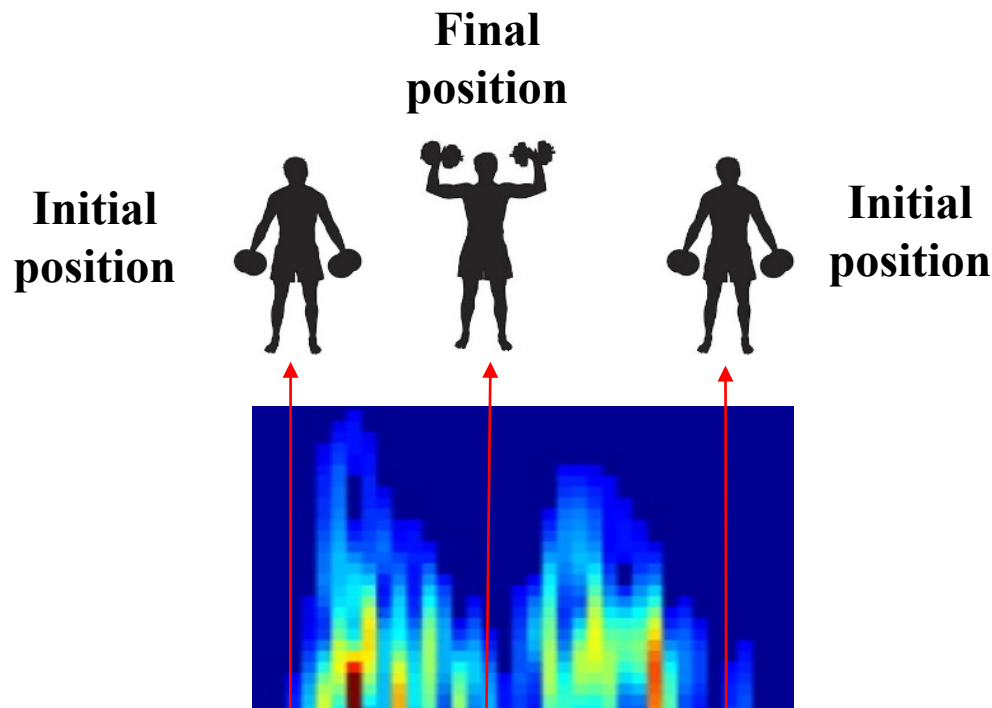
## □ Deep learning-based solution



# Workout Assessment

## □ Anatomy of a repetition

- ❖ A repetition: from **an initial position** to a **final position** and then back to **the initial position**
- ❖ Good exercise repetitions: **keep a constant rhythm** (i.e., the time ratio between concentric contractions and eccentric contractions)



# Workout Assessment (cont.)

## □ Two metrics

- ❖ **Work-to-rest ratio** □ measures the ratio between the time of repetition and the following time of rest
- ❖ **Repetition tempo ratio**: refers to the tempo (or speed) at which a user performs a repetition

$$\text{Work-to-rest ratio} = \frac{T_w^{(i)}}{T_r^{(i)}}$$

$$\text{Repetition tempo ratio} = \frac{T_{i2f}^i}{T_{f2i}^i}$$

$T_w^{(i)}$  : the time duration for the  $i^{\text{th}}$  workout

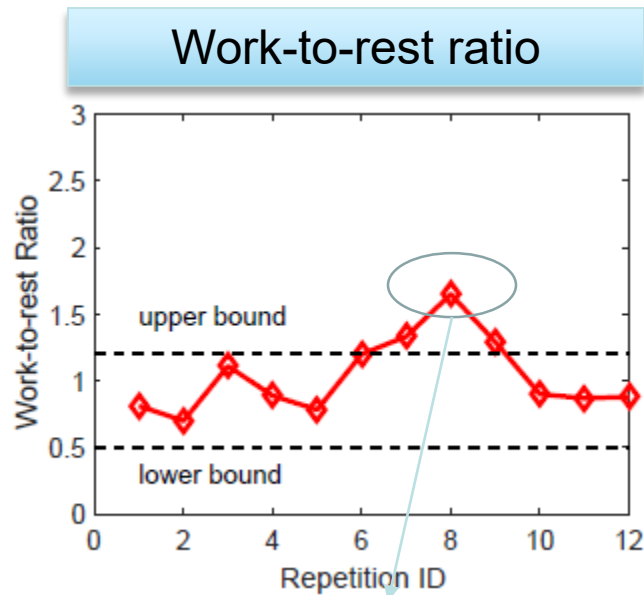
$T_r^{(i)}$  : the time duration of the rest followed by the  $i^{\text{th}}$  workout.

$T_{i2f}^i$  : the time duration from an initial position to a final position of the  $i^{\text{th}}$  repetition

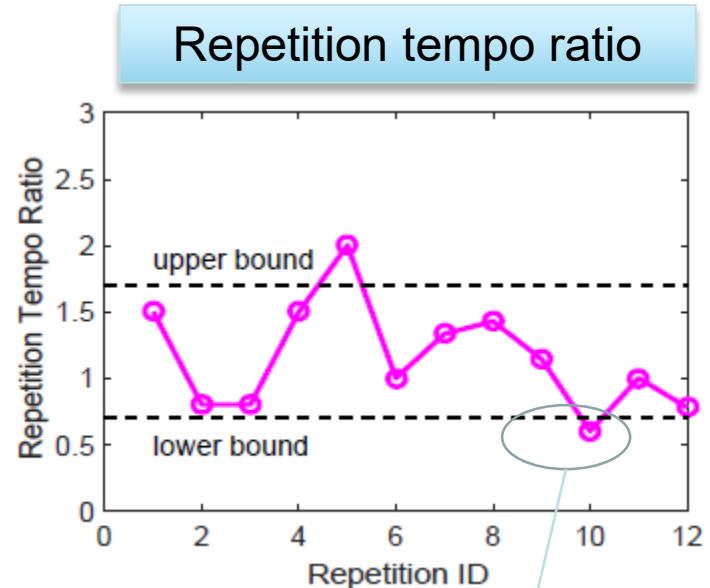
$T_{f2i}^i$  : the time duration from the final position back to the initial position of the  $i^{\text{th}}$  repetition.

# Workout Assessment (cont.)

- ❑ Perform workout assessment for each repetition based on the two metrics.
- ❑ Empirically set an upper and a lower bound so that the users can obtain feedback from the system.



Over the upper bound means the user **completes the repetition too fast**



Below the lower bound means the user has a **low speed from initial position to final position**



# Experimental Methodology

- **10 representative exercises**

Code	Exercise	Code	Exercise
Ex1	Standing biceps curl	Ex6	Tai Chi
Ex2	Lateral raise	Ex7	Dumbbell curl
Ex3	Leg stretch	Ex8	Pile squat
Ex4	Raise and squat	Ex9	Dumbbell triceps extension
Ex5	Leg press	Ex10	Body extension

- **Two laptops (Tx-Rx)**

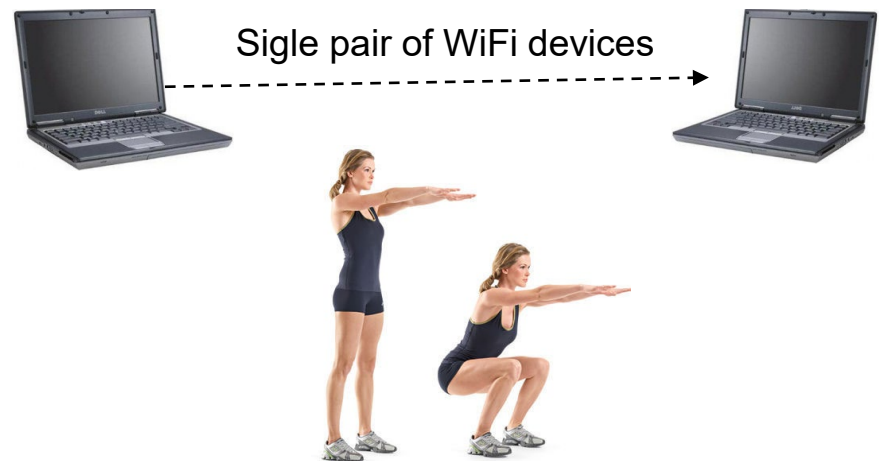
- ❖ Intel 5300 NICs

- **Data collection**

- ❖ 20 volunteers (18 males and 2 females)
- ❖ Three different indoor venues over a 10-month time period

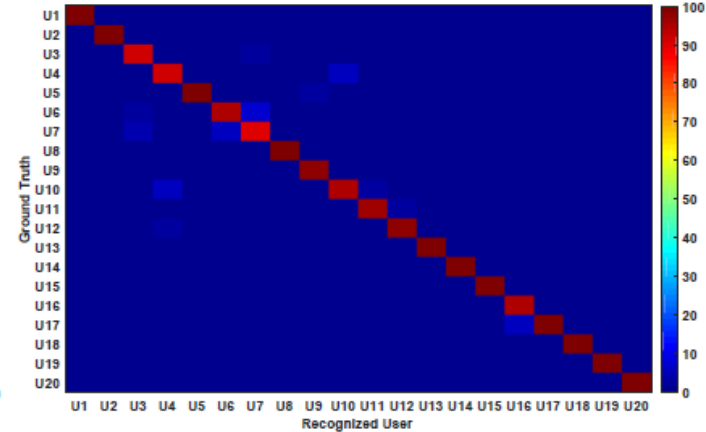
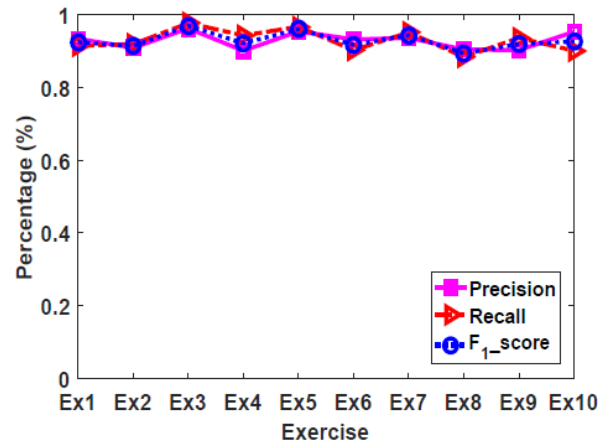
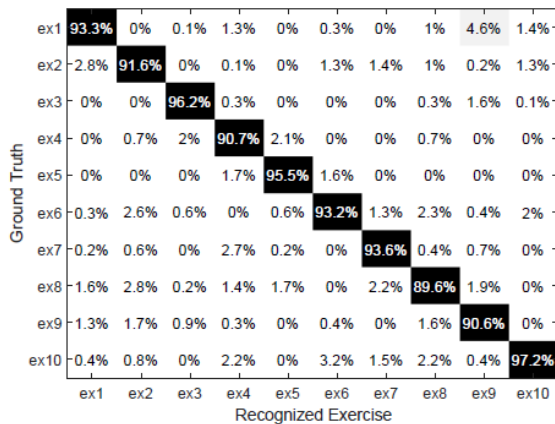
- **Evaluation metrics**

- ❖ Recognition accuracy;  
Precision; Recall; F-1 Score;



# Performance Evaluation

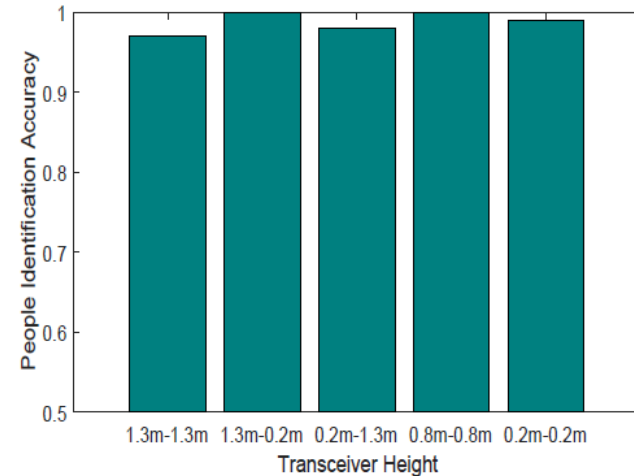
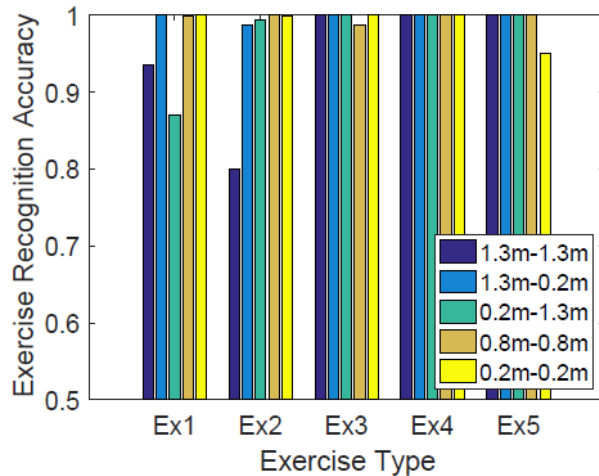
## □ DNN-based personalized workout recognition



- **Workout recognition** : achieves **93%** recognition accuracy and standard deviation is **2.6%**.
- **Robustness**: corresponding precision, recall and F1 score are all around **93%**.
- **People identification** : achieves **97%** for 20 users.

# Performance Evaluation (cont.)

- ❑ Impact of different heights of device placement (e.g., on the floor, table, furniture)



- ❑ **Exercise recognition:** Three height combinations (i.e., 1.3m – 0.2m, 0.8m – 0.8m, and 0.2m – 0.2m) achieve over **94%** accuracy for all five exercises.
- ❑ **People identification:** All heights achieves **97%** for 20 users.

# Conclusion

- ❑ Using ubiquitous **WiFi** signals can help users to achieve effective **in-home/office workout**.
- ❑ The DNN-based system can **differentiate individuals** on top of **fine-grained workout recognition**.
- ❑ Offering **personalized** fine-grained **workout statistics** including workout type, the number of sets, the number of repetitions and the user identity.
- ❑ Extensive experiments involving 20 participants demonstrate that the proposed system can achieve over **93% and 97% accuracy** to identify the type of performed exercises and the user.

*Thank You*

**Jian Liu**



**[jianliu@winlab.rutgers.edu](mailto:jianliu@winlab.rutgers.edu)**



**<http://www.winlab.rutgers.edu/~jianliu/>**



**RUTGERS**  
THE STATE UNIVERSITY  
OF NEW JERSEY

# Methodology

## ❑ Workout detection

- ❖ Detect the CSI segment that is related to **workout activities**

## ❑ Workout interpretation

- ❖ Provide **personalized information** about the **workout type** with statistic information (e.g., how many **sets** and how many **repetitions**)

## ❑ Workout assessment

- ❖ **Assess workout** in repetition level and provide **feedback** to users so as to help users correct their gestures

### Workout Identification

Offset removal

Repetitive  
pattern detection

### Workout Interpretation

Segmentation and  
Counting

Workout recognition

People identification

### Workout Assessment

Repetition speed and  
strength estimation

Workout review